



SASH WINDOW HARDWARE

India International House Limited

ADDRESS B-1 MMTTC / STC Colony, LSC Navjivan Vihar, NEW DELHI - 110017 (INDIA)

PHONE NO. +91 11 43575156 , 26691550

MOBILE NO. +91 9810517711 , 9811036192

EMAIL abg@skggroup.com , skg@skggroup.com

WEBSITE www.builderhardware.com

SASH / WINDOW HARDWARE

MATERIAL - BRASS



Casement Fastener

CFC-404

WEIGHT - 0.216gm

DIMENSION - (114x57)mm



Solid Fastener

CFC-501

WEIGHT - 0.262gm

DIMENSION - (93x60)mm



Rigid Espag Fastener

CFR-601

WEIGHT - 0.210gm

DIMENSION - (92x60x30)mm

SASH / WINDOW HARDWARE

MATERIAL - BRASS



Casement Fastener

CFV-201

WEIGHT - 0.235gm

DIMENSION - (102x60)mm



Wadge Fastener

CFV-202

WEIGHT - 0.123gm

DIMENSION - (105x 60x49)mm



Ball end Sashment Stay

CSB-300

WEIGHT - 0.305gm

DIMENSION - 301.8mm

SASH / WINDOW HARDWARE

MATERIAL - BRASS



OPEN CURLY

CSC-400

WEIGHT - 0.240gm

DIMENSION - 300mm



Rigid Stay

CSR-600

WEIGHT - 0.265gm

DIMENSION - 250mm



Solid Curly Stay

CSSC-500

WEIGHT - 0.265gm

DIMENSION - 250mm

SASH / WINDOW HARDWARE

MATERIAL - BRASS



VICTORIAN Stay

CV-200

WEIGHT - 0.245gm

DIMENSION - 200mm



Casement Stays

CS-2

WEIGHT - 0.304gm

DIMENSION - 210mm



Security Arm Fastener

SF-111

WEIGHT - 0.122gm

DIMENSION - (70 x 21)mm

SASH / WINDOW HARDWARE

MATERIAL - BRASS



Security Lock Fastener

SF-112

WEIGHT - 0.115gm

DIMENSION - (64 x 32 x 35)mm



Narrow Fitch Fastener Locking

SF-114

WEIGHT - 0.120gm

DIMENSION - (60 x 28 x 21)mm



Sash Handle

SF-117

WEIGHT - 0.04gm

DIMENSION - 5"

SASH / WINDOW HARDWARE

MATERIAL - BRASS

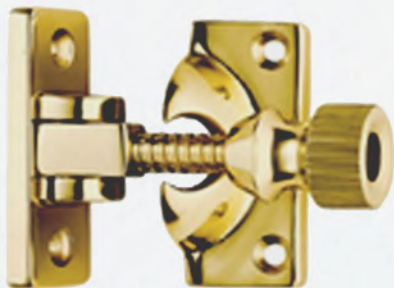


Sash Handle

SF-118

WEIGHT - 0.079gm

DIMENSION - 130mm



Knurry fastener

SF-120

WEIGHT - 0.115gm

DIMENSION - (57 x 20)mm



Sash Lift

SL1

WEIGHT - 0.618gm

DIMENSION - (48x48)mm

SASH / WINDOW HARDWARE

MATERIAL - BRASS



Vulcan style Handle

CFB-01

WEIGHT - 0.290gm

DIMENSION - (106 X 65 x43)mm



Standard Hook Fastener Lockable

CFB-05

WEIGHT - 0.197gm

DIMENSION - (76 x 48x37)mm



Tempo Fastener

CFB-06

WEIGHT - 0.245gm

DIMENSION - (114x60x30)mm

SASH / WINDOW HARDWARE

MATERIAL - BRASS



Split Rail Fastener

CFB-07

WEIGHT - 0.085gm

DIMENSION - (70x43x43)mm



Ball End Casement Stay

BCS-08

WEIGHT - 0.290gm

DIMENSION - 304.8mm

FINISH - Mottle Antique Brass \ Antique Brass



SASH / WINDOW HARDWARE

MATERIAL - Brass



Ball End Casement Stay

BCS-09

WEIGHT - 0.230gm

DIMENSION - 254mm

FINISH - Mottled Antique Pewter



Spoon End Casement Stay

BCS-10

WEIGHT - 0.215gm

DIMENSION - 254mm

FINISH - Satin Antique Brass / Antique Brass



Spoon End Casement Stay

BCS-11

WEIGHT - 0.240gm

DIMENSION - 304.8

FINISH - SSC

SASH / WINDOW HARDWARE

MATERIAL - BRASS



Spoon End Casement Stay

SCS -12

WEIGHT - 0.165gm

DIMENSION - 203.2mm

MATERIAL - Chrome Plated



Spiral Casement Stay

SCS -13

WEIGHT - 0.210gm

DIMENSION - 254mm

MATERIAL - Oil rubbed Bronze / Polished Brass



Spiral Casement Stay

SCS -14

WEIGHT - 0.180gm

DIMENSION - 203.2mm

MATERIAL - Polished Brass

SASH / WINDOW HARDWARE

MATERIAL - BRASS



Solid Curly Stay

SCS -15

WEIGHT - 0.240gm

DIMENSION - 304.8mm

MATERIAL - Chrome Plated



Ball End Locking Slimline Espagnolette L/H , R/H

BLSE -16

WEIGHT - 0.180gm

DIMENSION - 120 x 60mm

MATERIAL - Satin Chrome / Oil Rubbed Bronze



Ball End Locking Espagnolette L/H ,R/H

BLSE -19

WEIGHT - 0.170gm

DIMENSION - 120 x 60mm

MATERIAL - Satin Chrome / Chrome Plated

Curved Wheel Sash Pulley

MATERIAL - NYLON PULLEYS



Curved Wheel Sash Pulley

SPU-003

WEIGHT - 0.100gm

DIMENSION - (118X25)mm



Curved Wheel Sash Pulley

SPU-004

WEIGHT - 0.097gm

DIMENSION - (118X25)mm



Brass Standard / Large Pulleys

MATERIAL - BRASS



BPU-005

WEIGHT CAPACITY - (50/60)kg

DIMENSION - (76X39)mm

MATERIAL - Available in all finishes as per customer choice.



BPU-006

WEIGHT CAPACITY - (50,60)kg

DIMENSION - (76x39)mm

MATERIAL - Available in all finishes as per customer choice.



BPU-010

WEIGHT CAPACITY - 75 kg

DIMENSION - (83x50)mm

MATERIAL - Available in all finishes as per customer choice.



BPU-011

WEIGHT CAPACITY - 75 kg

DIMENSION - (83x50)mm

MATERIAL - Available in all finishes as per customer choice.

Sash Hardware

MATERIAL - BRASS



SL 11

DIMENSION - (45x49)mm

FINISH - Available in all finishes as per customer choice.



SL 12

DIMENSION - (43x48)mm

FINISH - Available in all finishes as per customer choice.



SL 13

DIMENSION - (45x49)mm

FINISH- Available in all finishes as per customer choice.



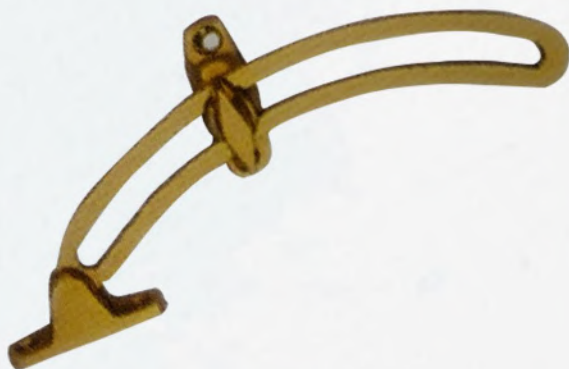
SL 14

DIMENSION - (39 x49)mm

FINISH - Available in all finishes as per customer choice.

Sash Hardware

MATERIAL - BRASS



SF 117

DIMENSION - 140mm

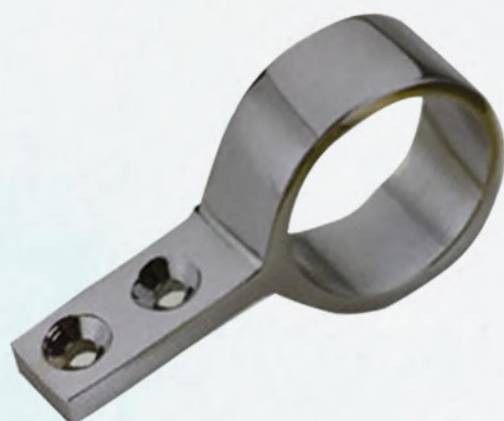
FINISH - Available in all finishes as per customer choice.



SF 118

DIMENSION - 143mm

FINISH - Available in all finishes as per customer choice.



SF 119

DIMENSION - (54X12)mm

FINISH- Available in all finishes as per customer choice.

Sash Hardware

MATERIAL - BRASS



SF 120

DIMENSION - (17X42)mm

FINISH - Available in all finishes as per customer choice.



SF 121

DIMENSION - 25mm

FINISH - Available in all finishes as per customer choice.





India International House Limited